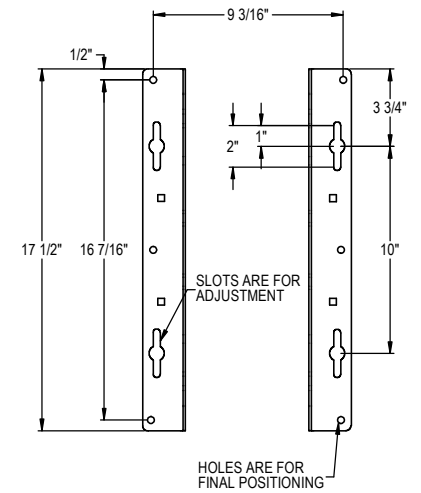


NOTES:

1. PLEASE VERIFY VOLTAGE, PHASE & MOUNTING.
2. ALL OPTIONAL ARE AT ADDED COST.
3. A CLEARANCE OF 6" SHOULD BE ALLOWED FOR ACCESS TO ELECTRIC BOX.
4. CONTROL VOLTAGE IS A NEC CLASS 2 CIRCUIT.
5. AVERAGE DOOR TRAVEL SPEED IS 8" PER SECOND.



MOUNTING BRACKETS

| | |
|--|----------------|
| ELECTRIC OPERATOR: GCL-H (STANDARD DUTY) | |
| DOOR TYPE: | ROLLING STEEL |
| MOUNTING TYPE: | WALL MOUNT |
| PROJECT: | |
| ARCHITECT: | |
| CONTRACTOR: | |
| DISTRIBUTOR: | |
| PLANT: | |
| DRAWN BY: | DATE: |
| APPROVED BY: | DATE: |
| DWG NO. | SHT ___ OF ___ |
| ENG. CERT. NO. | |

| ARCHITECT DOOR NUMBER | QTY | FACTORY ORDER NUMBER | MOUNT TYPE | VOLTS | | | | | PHASE | | CONTROL STATION | | | |
|-----------------------|-----|----------------------|--------------------------|-------|-----|-----|-----|-----|---------|---------|-----------------|------------|---------------------|--|
| | | | WALL MOUNT ROLLING STEEL | 115 | 208 | 230 | 460 | 575 | 1 PHASE | 3 PHASE | 3 BTN | KEY SWITCH | EXT. FLUSH 3 BUTTON | |
| | | | | | | | | | | | | | | |
| | | | | | | | | | | | | | | |
| | | | | | | | | | | | | | | |